



The compact pump designed especially for gas-fired boilers.



4,5 m
→ 50 m

SANICONDENS® Eco



Delivered with a complete installation kit

Possible connections	gas boilers, air conditioning units, refrigeration units and dehumidifiers
Inlet Ø	28 mm
Discharge Ø	8 mm
Tank volume	1 L
Maximum flow rate	342 L/h
Maximum admissible waste water temperature	80°C - S3 15 %

Maximum power of condensing boilers

50 kW gas-fired boilers

Electrical power supply 220-240 V / 50-60 Hz

Motor power rating 60 W

Maximum current input 0,52 A

Electrical classification I

Index of protection IP 20

Weight 1,3 kg

Sound level < 45 dB(A)

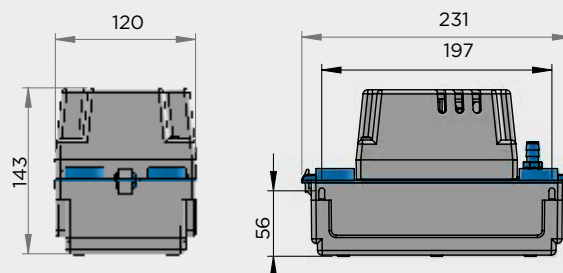
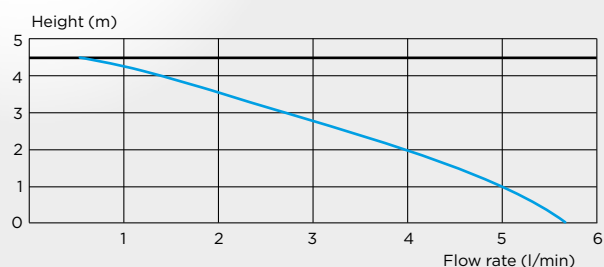
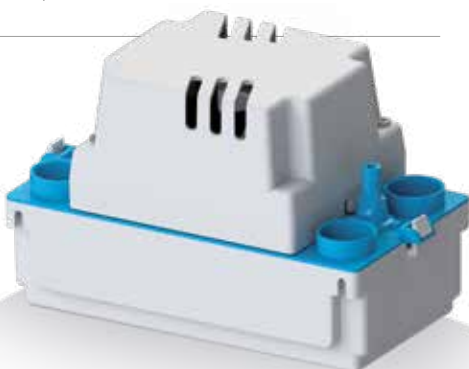
Waste pipe diameter 4 x Ø 28 mm

Discharge pipework 8/11 mm

Fits on the wall or floor. Non-return valve included.

Delivered with mounting screws, 1 intake adapter, 1 output adapter (diam 50 mm), 1 power cord (2 m), 6 m of flexible discharge pipe

VERTICAL AND
HORIZONTAL
DISCHARGE:
↑ 4,5 m → 50 m



BENEFITS

- Designed to evacuate acidic condensate
- 1 L tank
- Four inlets
- Supplied with 2m of electric cable and 6m of drainage pipe